

WILLOUGHBY PLAT NO. 19, A P.U.D.(r) (Willoughby Crossroads)

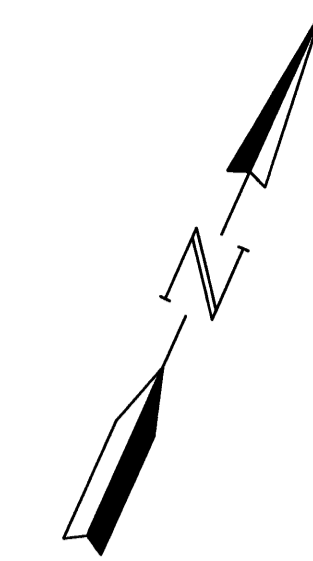
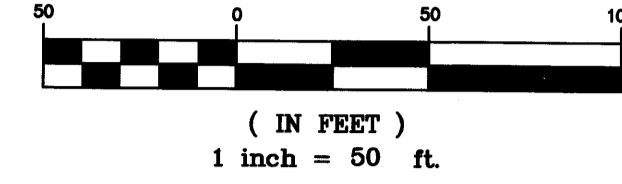
Being a parcel of land lying in the Hanson Grant, Martin County,
Florida and being a part of an abandoned portion of Stuart Farms as
recorded in Plat Book 1, Page 63, public records, Martin County, Florida

April 2002

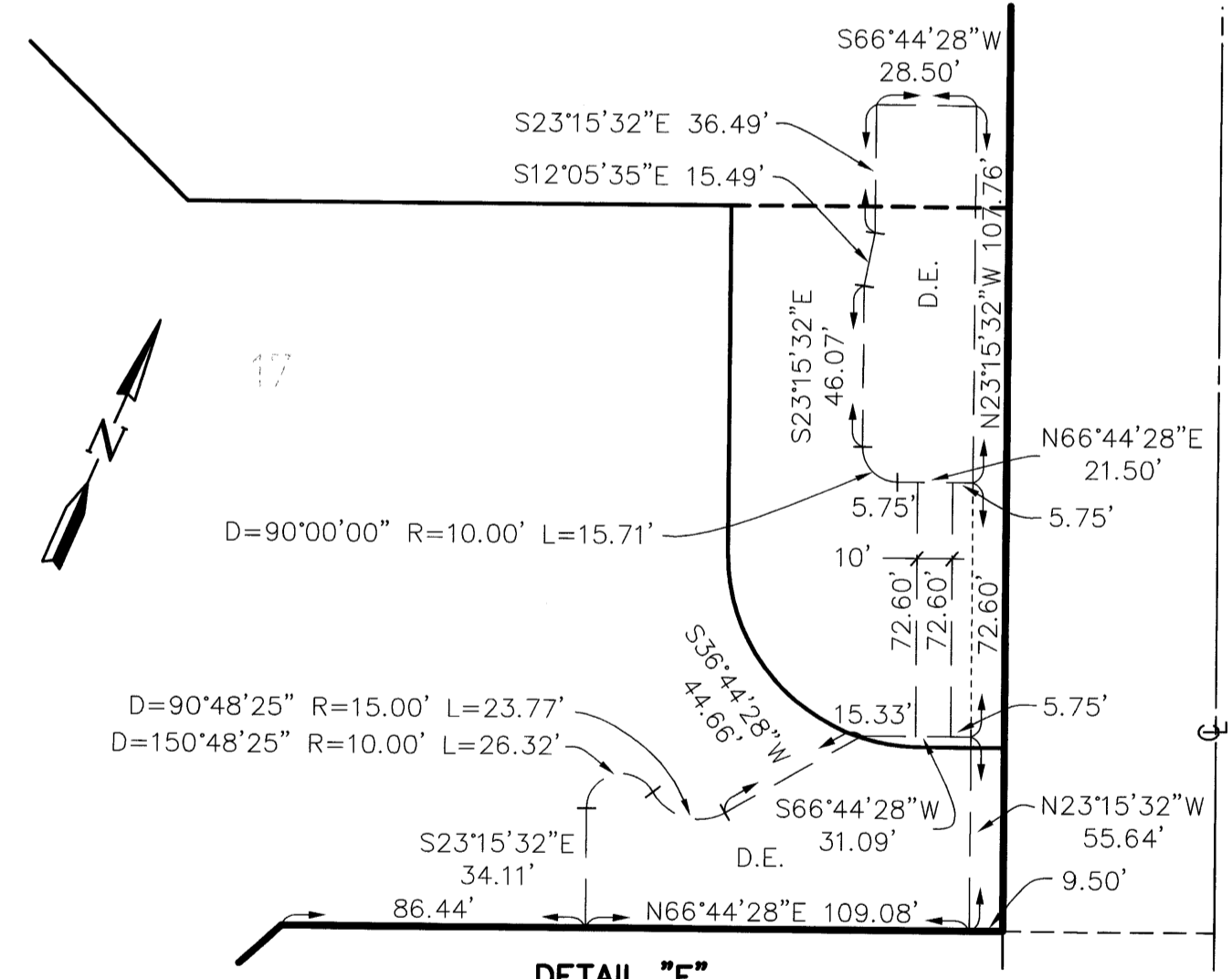
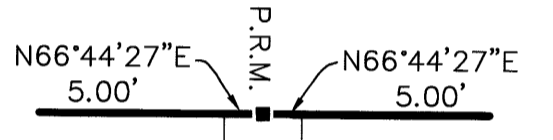
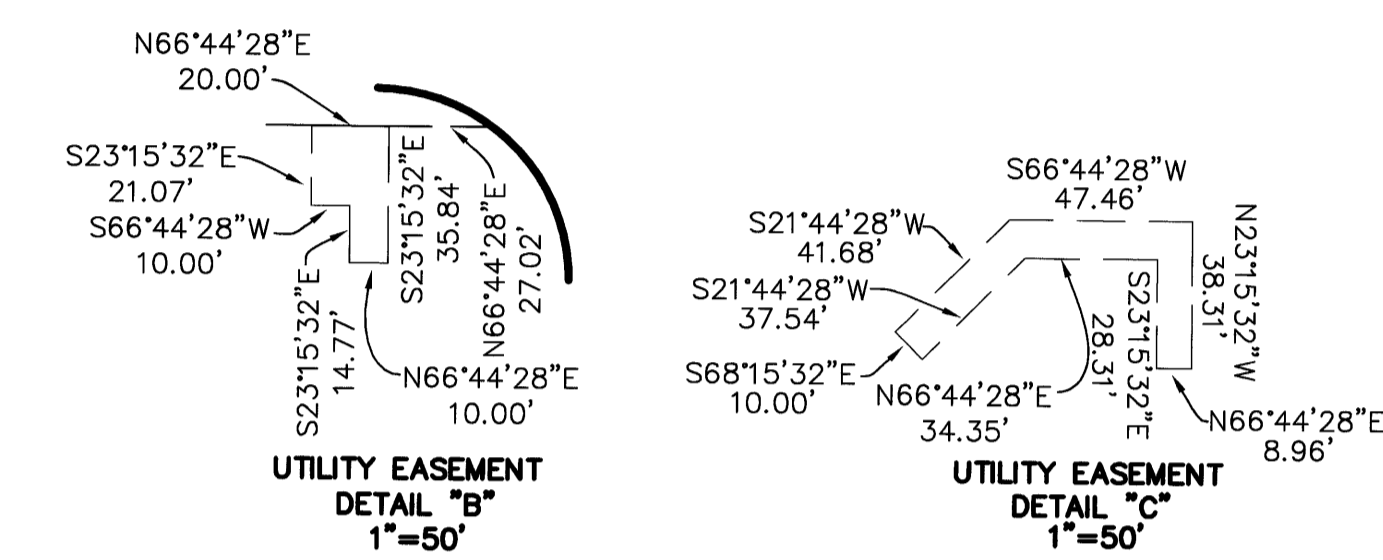
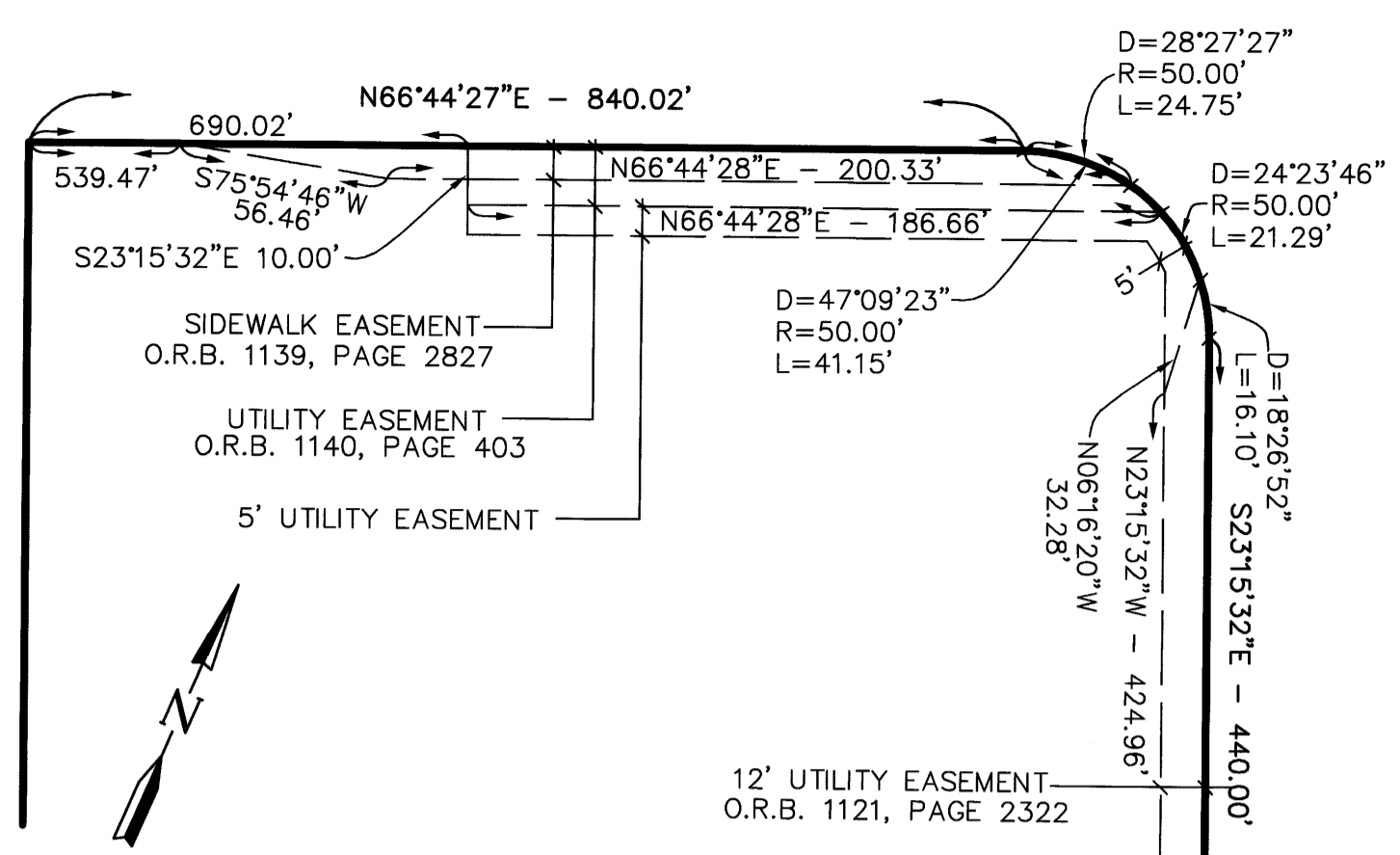
S.E. INDIAN STREET

Plat Book 15
Page 26

GRAPHIC SCALE



1 JUN 21 PM 2:04
 LINK OF CHICUT OCCAS
 BZ

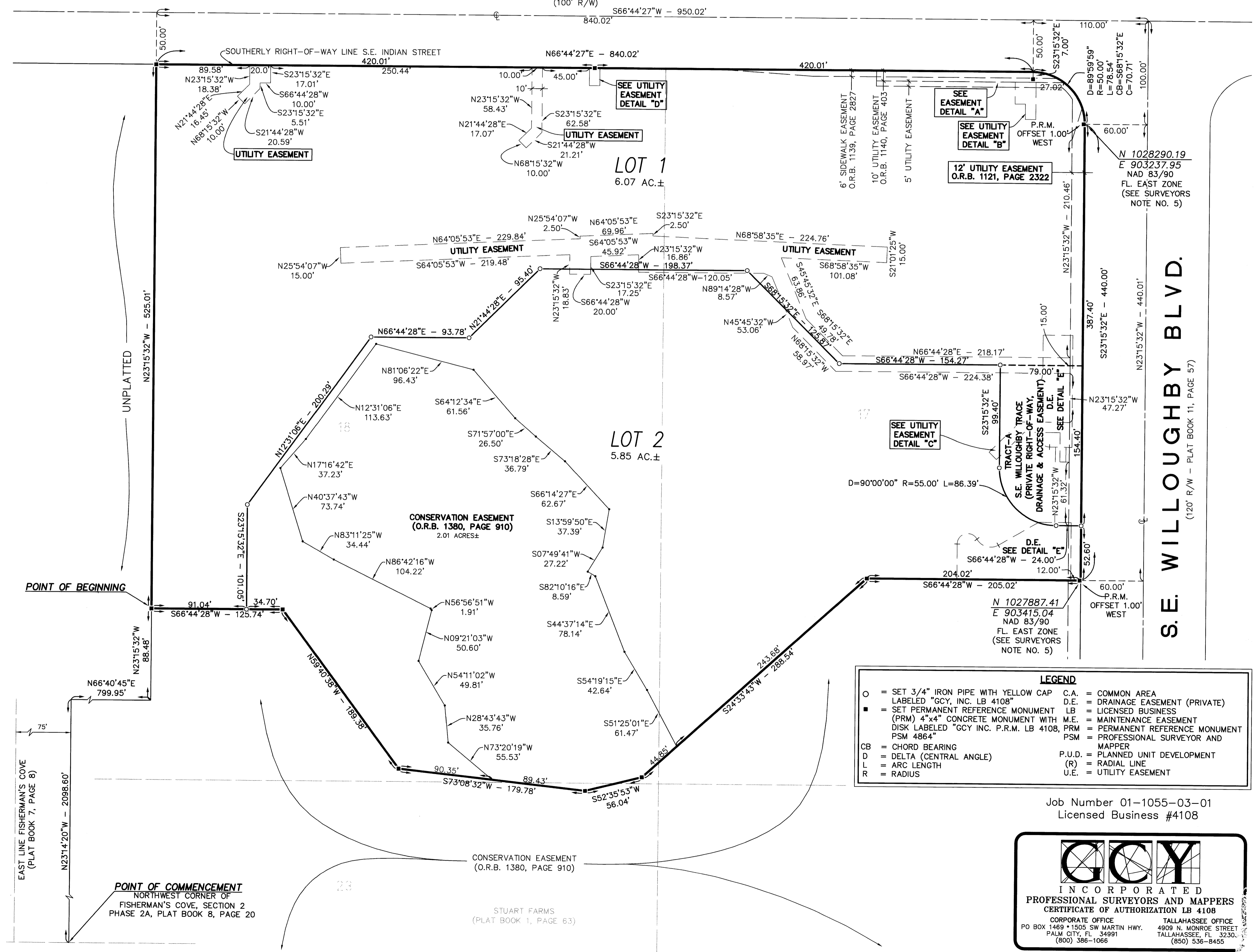


SURVEYOR'S NOTES

- 1) THIS PLAT, AS RECORDED IN ITS ORIGINAL FORM IN THE PUBLIC RECORDS IS THE OFFICIAL DEPICTION OF THE SUBDIVIDED LANDS DESCRIBED HEREON AND WILL IN NO CIRCUMSTANCES BE SUPPLANTED IN AUTHORITY BY ANY OTHER FORM OF THIS PLAT, WHETHER GRAPHIC OR DIGITAL.
- 2) THERE MAY BE ADDITIONAL RESTRICTIONS THAT ARE NOT RECORDED ON THIS PLAT THAT MAY BE FOUND IN THE PUBLIC RECORDS OF THIS COUNTY.
- 3) THERE SHALL BE NO BUILDING OR ANY OTHER KIND OF CONSTRUCTION, OR PLACEMENT OF TREES OR SHRUBS ON DRAINAGE EASEMENTS.
- 4) BEARINGS SHOWN HEREON ARE REFERENCED TO THE NORTH LINE OF FISHERMAN'S COVE SECTION 2, PHASE 2A, AS RECORDED IN PLAT BOOK 8, PAGE 20, PUBLIC RECORDS, MARTIN COUNTY, FLORIDA. SAID LINE BEARS SOUTH 66°36'26" WEST.
- 5) STATE PLANE COORDINATES AS SHOWN HEREON ARE FOR INFORMATIONAL PURPOSES ONLY. THE BEARINGS SHOWN HEREON ARE NOT REFERENCED TO THE FLORIDA STATE PLANE COORDINATE SYSTEM.

ACREAGE TABULATION

LOT 1	-	6.07 AC.±
LOT 2	-	5.85 AC.±
TOTAL	-	11.92 AC.±



LEGEND

○ = SET 3/4" IRON PIPE WITH YELLOW CAP	C.A. = COMMON AREA
● = LABELED "G.C.Y. INC. LB 4108"	D.E. = DRAINAGE EASEMENT (PRIVATE)
■ = SET PERMANENT REFERENCE MONUMENT	LB = LICENSED BUSINESS
(PRM) 4"x4" CONCRETE MONUMENT WITH	M.E. = MAINTENANCE EASEMENT
DISK LABELED "G.C.Y. INC. P.R.M. LB 4108,	PRM = PERMANENT REFERENCE MONUMENT
PSM 4864"	PSM = PROFESSIONAL SURVEYOR AND MAPPER
CB = CHORD BEARING	P.U.D. = PLANNED UNIT DEVELOPMENT
D = DELTA (CENTRAL ANGLE)	(R) = RADIAL LINE
L = ARC LENGTH	U.E. = UTILITY EASEMENT
R = RADIUS	

Job Number 01-1055-03-01
Licensed Business #4108

G C Y

INCORPORATED

PROFESSIONAL SURVEYORS AND MAPPERS

CERTIFICATE OF AUTHORIZATION LB 4108

CORPORATE OFFICE TALLAHASSEE OFFICE
 PO BOX 1469 • 1505 SW MARTIN HWY. 4909 N. MONROE STREET
 PALM CITY, FL 34991 TALLAHASSEE, FL 32301
 (800) 366-1066 (850) 536-8455